

**26. Simpson House**

**LHC 304 E. Cleveland St.**

This home was built by John Simpson in 1889. He opened the Simpson Coal Mine which was the first mine in Lafayette.

**27. Parks Boarding House**

**★ 302 E. Cleveland St.**

John Parks was City Marshal and Deputy Sheriff for Lafayette in the early 1900s. This home was built in 1900.

**28. W. W. Moon House**

**LHC 301 E. Cleveland St.**

This home was moved from Louisville in 1889. It was the second permanent house in Lafayette and was Lafayette's first Boarding House.

**29. Kulgren House**

**NR 209 E. Cleveland St.**

The Kulgren's operated a boarding house out of their home which was constructed in 1896. The smaller building in the rear was the wash house. It was placed on the National Registry May 20, 1983.

**30. Rose Terraces**

**NR 205 E. Cleveland St.**

These apartments were homes for newcomers until they could get situated. They date back to 1900 and were placed on the National Registry in 1989.

**31. George Bermont House**

**LHC 203 E. Cleveland St.**

This home was built by George Bermont in 1890. A few years later he added the back and top floor. He resided in this home until the mid 1940s. George Bermont owned the general store at 309 E. Simpson St.

**32. Peltier House**

**LHC 107 South Public Road**

In 1900, Peter Peltier built this house and opened the Elkhorn Saloon which was located in the same block.

**33. Hi-Way Food Store**

**LHC 210 South Public Road**

The building was constructed in 1877 at Irvington, east of Lafayette. It was moved to this location in 1923 and operated as a grocery store. It was purchased by Joe Rodwick, Sr. shortly thereafter.



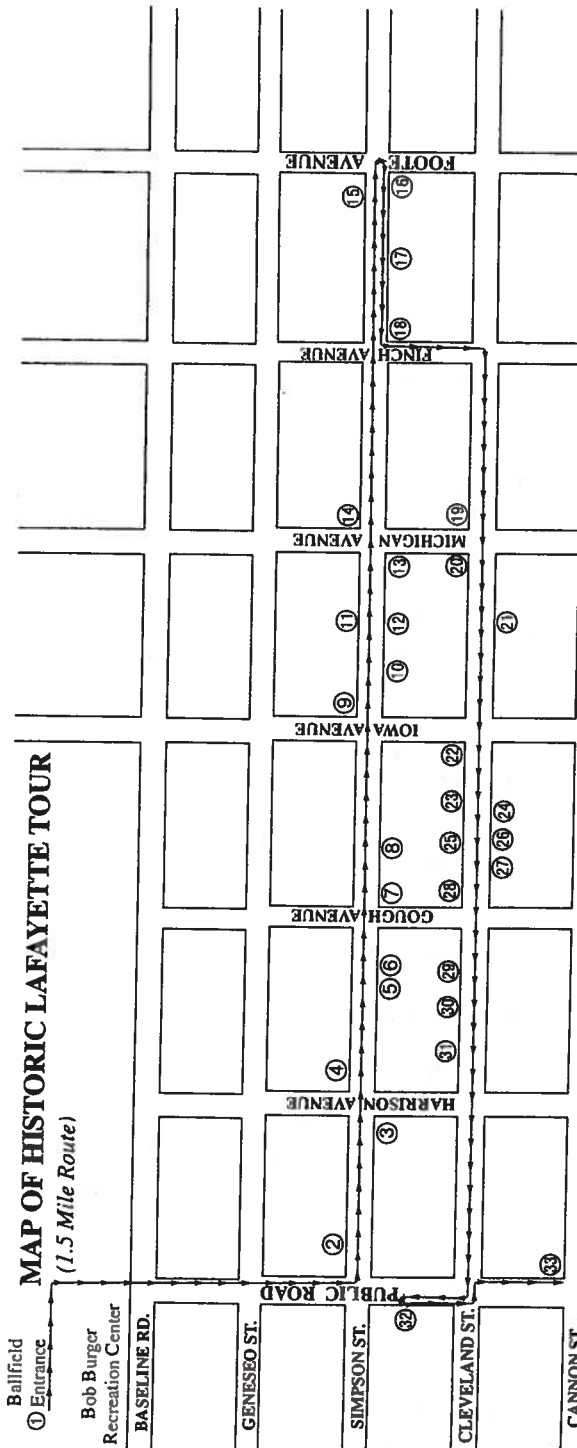
Joy Loader Operator Is Eddie Abeyta  
Area mines were a part of Colorado's Northern Coal Field and had very rich bituminous coal.

**LEGEND**

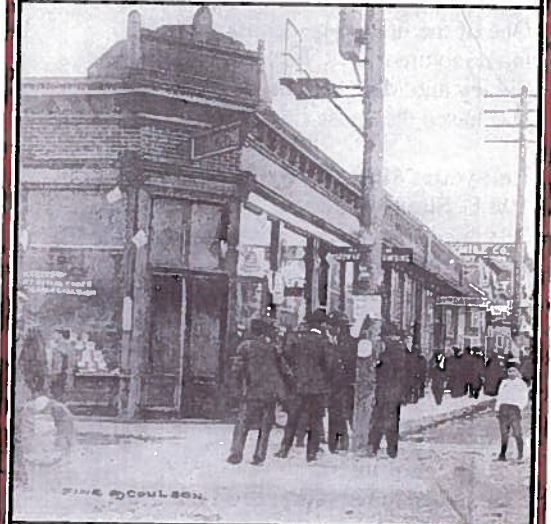
- LHC** Lafayette Healthy Communities Plaque
- NR** National Register of Historic Places
- ★** Informational Only

**Lafayette Healthy Communities Board:**

- Sharon Stetson, Chair
- Sam Bradley
- Frank Archuleta
- Heather Fliege
- JoEllen Hawkinson
- Marsha Robichaux
- Larry Rosales
- Cory Sevin
- Beverly Smith, Coordinato



# HISTORIC LAFAYETTE WALKING TOUR



1900's view from corner of Michigan and Simpson looking west.  
Courtesy of Lafayette Historical Society

Donated by: Lafayette Healthy Communities



Funded by: The Colorado Trust Grant (1998)  
Native people plaque researched by:  
Frank Archuleta and Larry Rosales  
Historic plaques researched by:  
James D. Hutchison

# HISTORIC LAFAYETTE WALKING TOUR

- 1. Native People/American Indian/Hispanic Heritage Memorial**  
 LHC 111 W. Baseline Road, (Northwest of Bob Burger Recreation Center near the ballfields)  
 A testimonial to the Native People of Colorado
- 2. Joe Rodwick House**  
 LHC 103 E. Simpson St.  
 One of the first homes built of locally manufactured brick. Earliest owners were Sidney and Mary Pascoe. Joe Rodwick purchased the house in 1935.
- 3. Lafayette Miners Museum**  
 HR 108 E. Simpson St.  
 A typical coal miner's home built in the 1890s at the Gladstone mine north of Lafayette. It was moved here after the start of the 1910 coal strike. William and Hanna Lewis purchased it in 1913. In 1976 it was purchased for a museum by the Lafayette Historical Society.
- 4. Original City Hall**  
 LHC 201 E. Simpson St.  
 Completed in February, 1907 at a cost of \$1555. This facility housed City Offices from 1907 - 1985. The building committee included Mayor Thomas Benyon, Councilman Christian Miller and Councilman Thomas Kerby.
- 5. Padfield House**  
 LHC 206 E. Simpson St.  
 One of the few homes with the gingerbread trim intact.
- 6. Kettle Dry Goods Store**  
 LHC 208 E. Simpson St.  
 Began business in 1909 as a cafe then became a general store. It was operated as a beauty shop from 1929 to 1992. At the time it closed, it was the longest running business in Lafayette.

- 7. Mary Miller Theater**  
 HR 300 E. Simpson St.  
 In 1892, the Congregational Church was constructed and paid for by donations. However, Mary Miller provided much of the funding. It was used as an emergency hospital during the 1918 influenza epidemic. A small library was started in 1923 and in 1928 it was sold to the Christian Science Society. The city acquired this property in 1964 and converted it to a library. In 1986 it became a theater.

- 8. Moons Meat Market**  
 LHC 304 E. Simpson St.  
 Built in 1891 by Walter Moon and operated as a meat market until 1913.

## Main Business District

- \* 400-424 E. Simpson St.  
 At one time this one block area housed not only clothing and shoe stores, but also housed banks, post office, barbershop, doc or and dentist offices, drug store, utility offices, car dealerships, an opera house, a hardware store, grocery stores, and newspaper office.

- 9. Brown Shoe Store**  
 LHC 401 E. Simpson St.  
 Housed a variety of businesses including the post office, a shoe store, harness shop, and plumbing shop from 1889 to the present.

- 10. Rocky Mt. Fuel Co. Store**  
 LHC 404 E. Simpson St.  
 This building was constructed in 1898 and destroyed by fire in 1900. It was rebuilt in 1901 and purchased by Northern Coal and Coke Co. In 1911 it was renamed to Rocky Mountain Fuel Company Store. The up stairs was used for social functions, dances, meetings and fairs. It was purchased by I.O.O.F. in 1934. It now houses Boulder County Social Services.

- 11. Webber Building**  
 \* 407 E. Simpson St.  
 Originally operated as a blacksmith shop and livery stable. It burned twice and was rebuilt. The early building had a skating rink on the 2nd floor. A Ford dealership operated out of the first floor.

- 12. Charles Scholes Grocery & Bakery**  
 LHC 414 E. Simpson St.  
 Operated as a bakery and cash grocery from 1914 to 1959.

- 13. Dow Drugstore**  
 LHC 424 E. Simpson St.  
 This building housed a drug store, doctors office, post office and the Alderson Hub Clothing Store.

- 14. J. S. Morgan Grocery**  
 LHC 501 E. Simpson St.  
 A grocery store was operated out of this building from early 1900 to approximately 1948. The building was remodeled in 1996.

- 15. Allen House**  
 \* 609 E. Simpson St.  
 This home was built in late 1890. It was a mortuary from 1922 to the mid-1950s at which time it was converted to apartments.

- 16. Noble/Angevine House**  
 LHC 610 E. Simpson St.  
 Built in 1890 by S. J. Gildner from brick of the Lafayette Kiln. Noble added the second floor and in 1937 sold it to Merrill Angevine, teacher, coach and Superintendent of Lafayette Schools and Assistant Superintendent of Boulder Valley.

- 17. Colorado Southern Depot**  
 LHC 604 E. Simpson St.  
 The depot was constructed in 1900 and was located along the alley on Finch between Cleveland and Cannon Streets. It was moved to the present location and remodeled in 1930. The bay window on the west side of the house was once the telegraph window.

- 18. Boarding House**  
 NR 600 E. Simpson St.  
 Built circa 1892 this building was opened for business in 1900 for boarders and overnight guests. The charge of 50 cents per night or \$3.00 per week included meals. It was called the Union Hotel in 1904. In the 1940s it became the Pillar of Fire School. The wash house was used as a nursery. It was put on the National Registry May 10, 1983.

- 19. Thomas Miller House**  
 LHC 501 E. Cleveland St.  
 Lafayette's first mayor, Thomas Miller, oldest son of Mary and Lafayette Miller, lived in this home from 1900 to 1902. He was superintendent at the Strathmore mine where he was killed in 1902. His family continued to live at this residence for many years.

- 20. Miller House**  
 NR 409 E. Cleveland St.  
 This area was considered to be the approximate center of the future community of Lafayette. Mary Miller had this home built in 1889. She died November 14, 1921. Her sister, Laura Kimbark, lived in the house for another 30 years. It was placed on the National Registry May 20, 1983.

- 21. School House**  
 \* 408 E. Cleveland St.  
 A school was started at this location after the founding of the town in 1889. This site was used until 1895 when a new school was erected on Baseline Road.

- 22. Tim Moon House**  
 LHC 311 E. Cleveland St.  
 This house was constructed circa 1900 and was used as a boarding house.

- 23. Beckett House**  
 LHC 307 E. Cleveland St.  
 This house was built in 1900 and was used as a temporary post office for six years. E. E. Beckett was postmaster from 1899 to 1909.

- 24. Station Agent House**  
 \* 306 E. Cleveland St.  
 Originally built by the B & M Railroad this house was a home for the station agent. The telegrapher's desk sat in the front bay window. It was moved to this location by Dr. W. F. McCormack in the 1900s.

- 25. Bradley Hotel**  
 \* 305 E. Cleveland St.  
 This building operated as a hotel from 1905 to the 1930s.