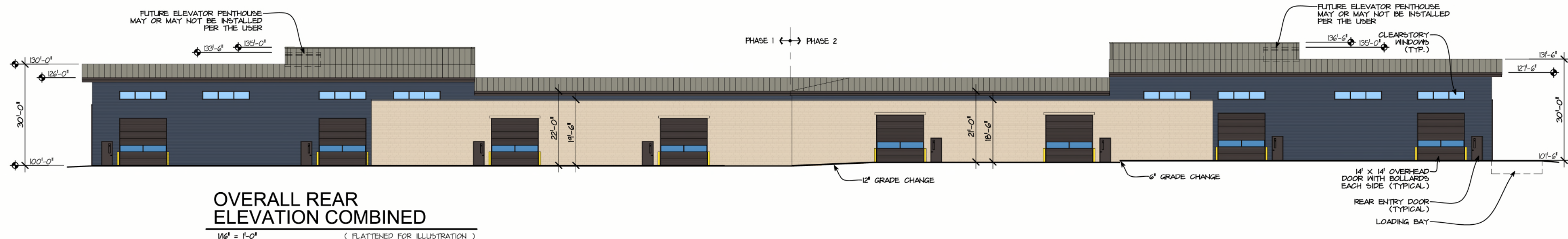
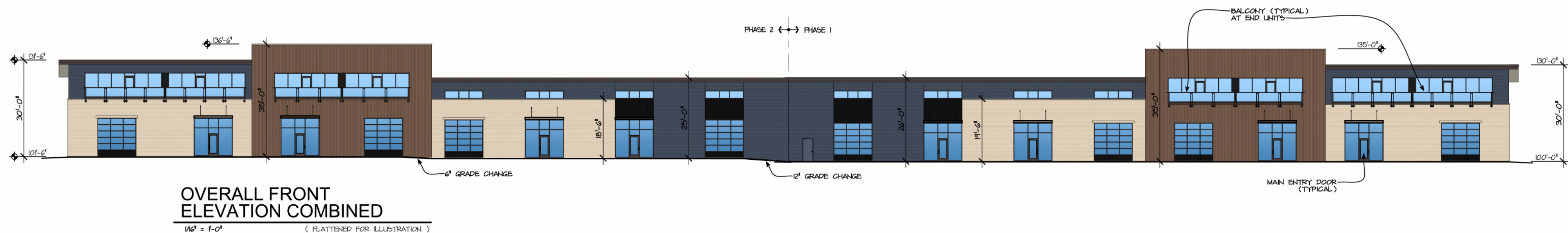


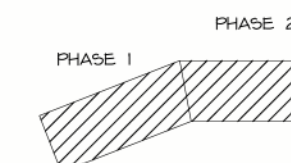
# VISTA BUSINESS PARK SITE DEVELOPMENT PLAN

LOTS 29 & 30, VISTA BUSINESS PARK, LOCATED IN THE WEST HALF OF SECTION 12,  
TOWNSHIP 1 SOUTH, RANGE 69 WEST OF THE 6TH P.M.,  
CITY OF LAFAYETTE, COUNTY OF BOULDER, STATE OF COLORADO

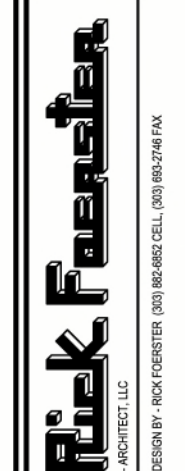
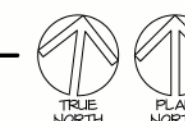
REVISION	DATE
1	
2	
3	
4	
5	
6	
7	
8	
9	



EXTERIOR MATERIAL / FINISH SCHEDULE				
LEGEND	MANUFACTURER	SERIES / PRODUCT	COLOR NO.	TYPE & FINISH
[Symbol]	IMITATION STONE VENEER BY CULTURED STONE	HEWN STONE	PATTERN:HSP5609	MANUFACTURER'S INTEGRAL COLOR / MIX FINISH
[Symbol]	INSULATED METAL PANEL BY KINGSPAN	KARRIER 24 GA. EM15-126 PROFILE RAINSCREEN	SLATE GREY	MANUFACTURER'S PREFINISHED COLOR / FINISH
[Symbol]	INSULATED METAL PANEL BY KINGSPAN	KS SERIES SHADOWLINE WALL PANEL NO RAINSCREEN	SPARTAN BRONZE	MANUFACTURER'S PREFINISHED COLOR / FINISH
[Symbol]	BEHLEN	STANDING SEAM ROOF PANELS	ASH GREY	MANUFACTURER'S PREFINISHED COLOR / FINISH



**KEY PLAN**  
NO SCALE



LOTS 29 & 30, VISTA  
BUSINESS PARK  
SITE DEVELOPMENT PLAN  
HORIZON AVENUE, LAFAYETTE 80026  
EXTERIOR ELEVATIONS - PHASE 1

CALL UTILITY NOTIFICATION CENTER OF COLORADO 811  
MEMBER UTILITIES. CALL 811  
ADVANCE FOR THE MARKING YOU CAN TRUST. OR, CONTACT YOUR LOCAL UTILITY.

**DRAWING**  
**A4**  
SHEET  
20 OF 34