

MEDICAL	2239
ALARM	269
HAZMAT	48
FIRE	31
OTHER	737

"HAZMAT" INCLUDES:

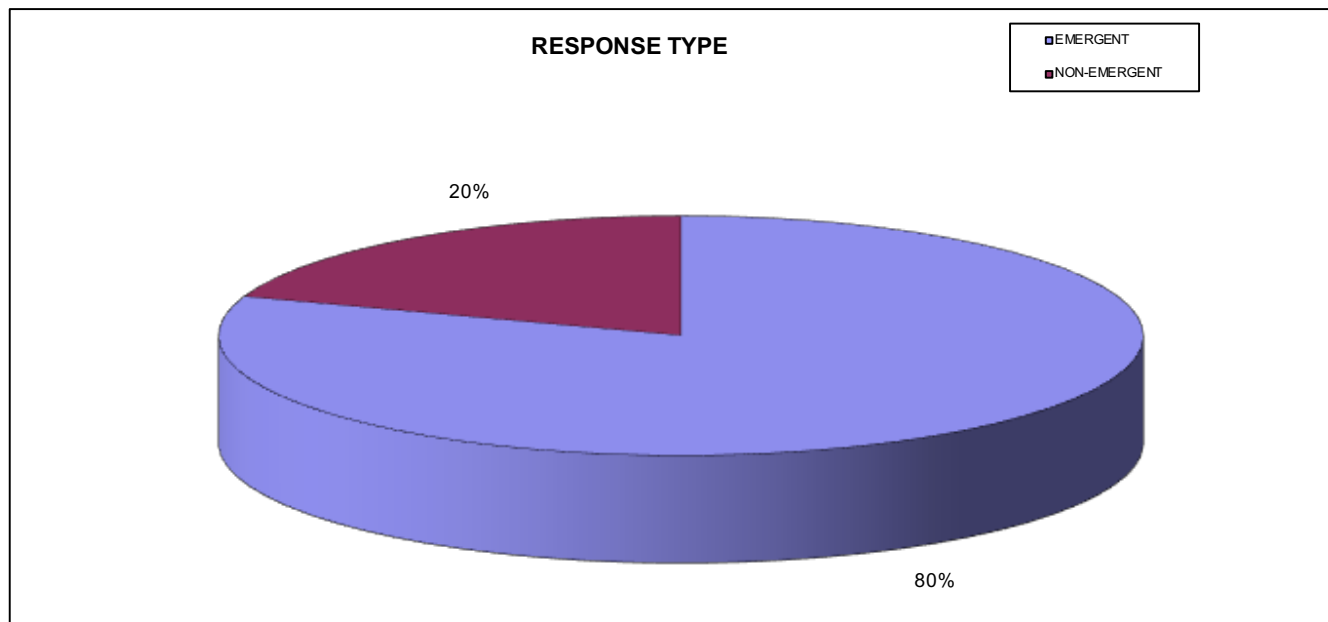
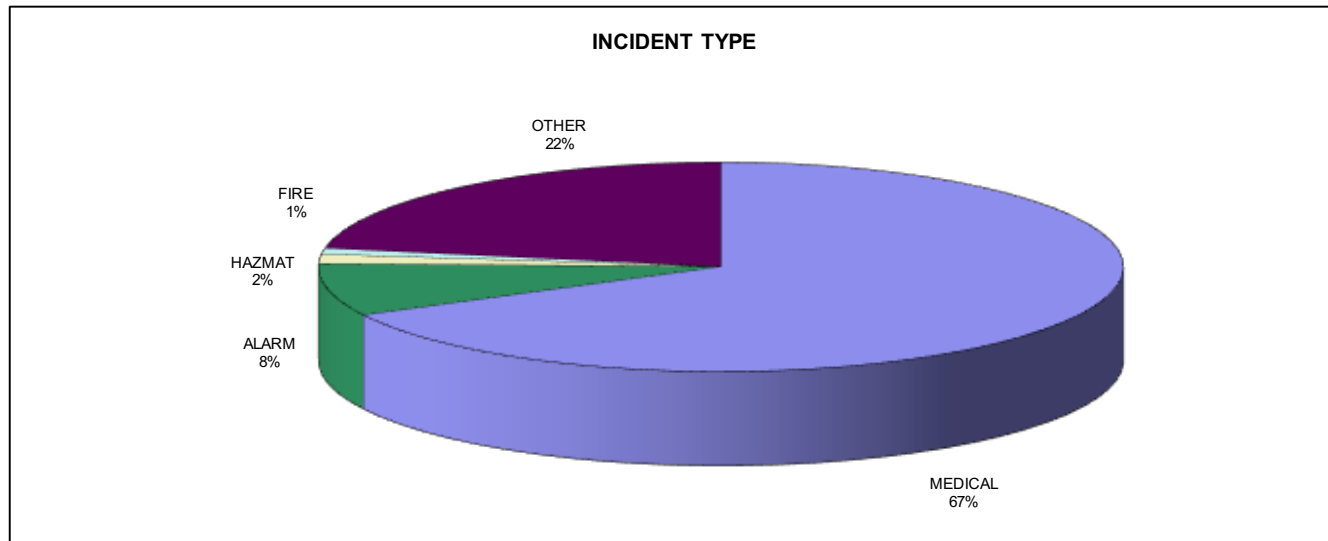
Gas Leaks	33
Miscellaneous	15

"OTHER" INCLUDES:

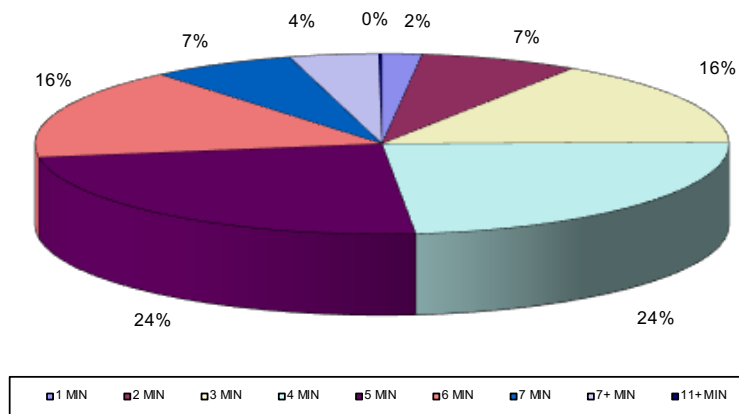
Lift Assist	112
Blood Draw	28
Lock Out Assist	20
Elevator Issue	11
Water Leak	13
Smoke / Odor	104
Miscellaneous	449

EMERGENT	1998
NON-EMERGENT	491

CANCELLED ENROUTE	433
--------------------------	-----



EMERGENT RESPONSES

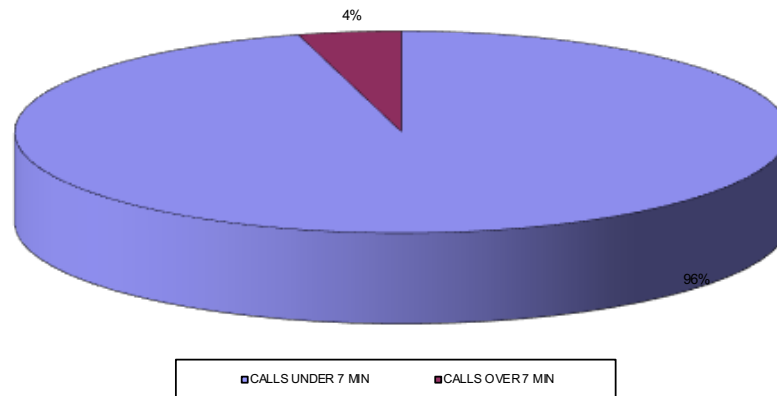


MINUTES	1 MIN	2 MIN	3 MIN	4 MIN	5 MIN	6 MIN	7 MIN	7+ MIN	11+ MIN
NUMBER OF CALLS	37	148	310	473	482	327	135	83	3

* Does not include out of district responses

AVERAGE RESPONSE TIME 4.6 minutes

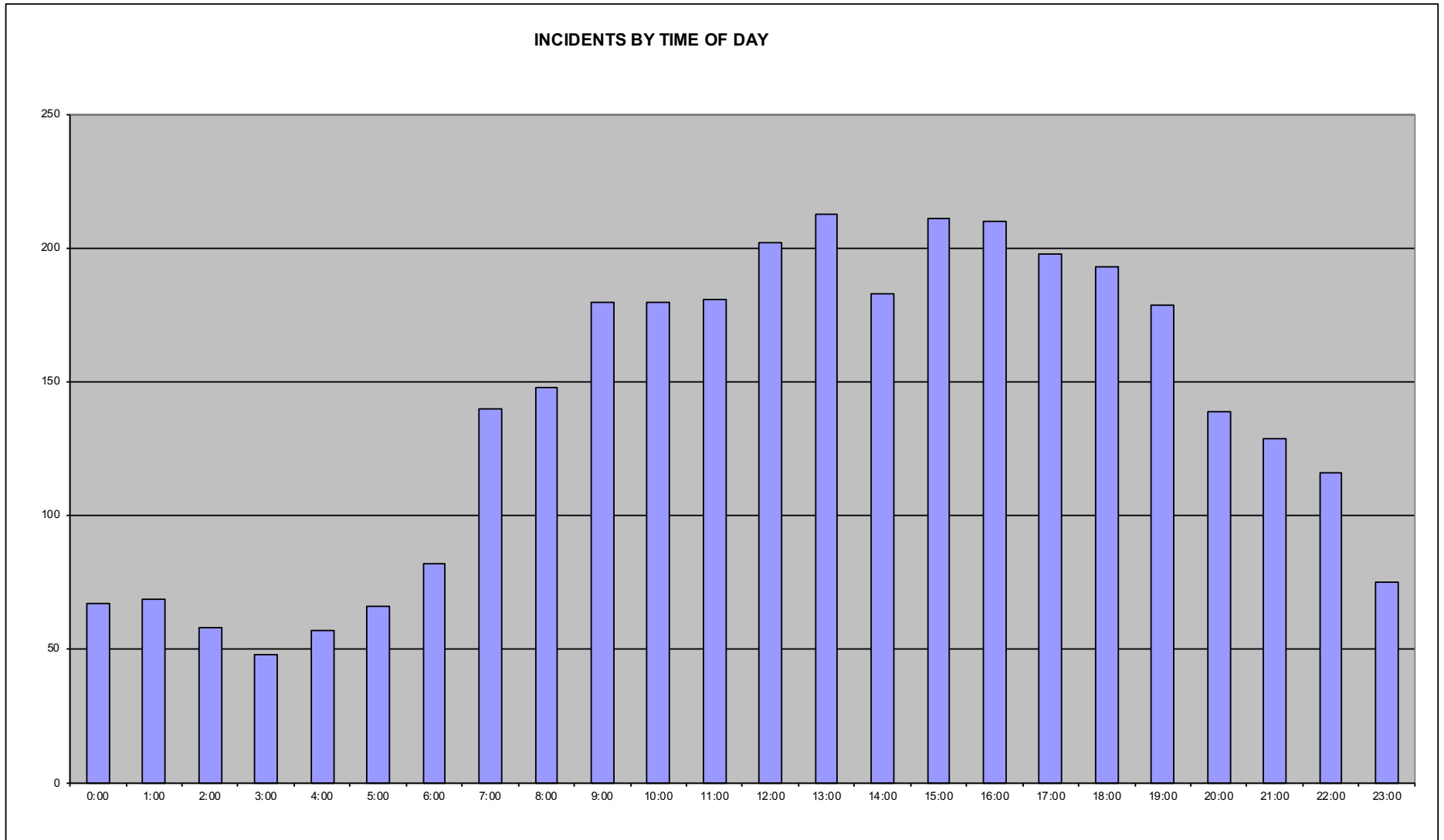
COMPLIANCE FOR EMERGENT RESPONSES LESS THAN 7 MINUTES



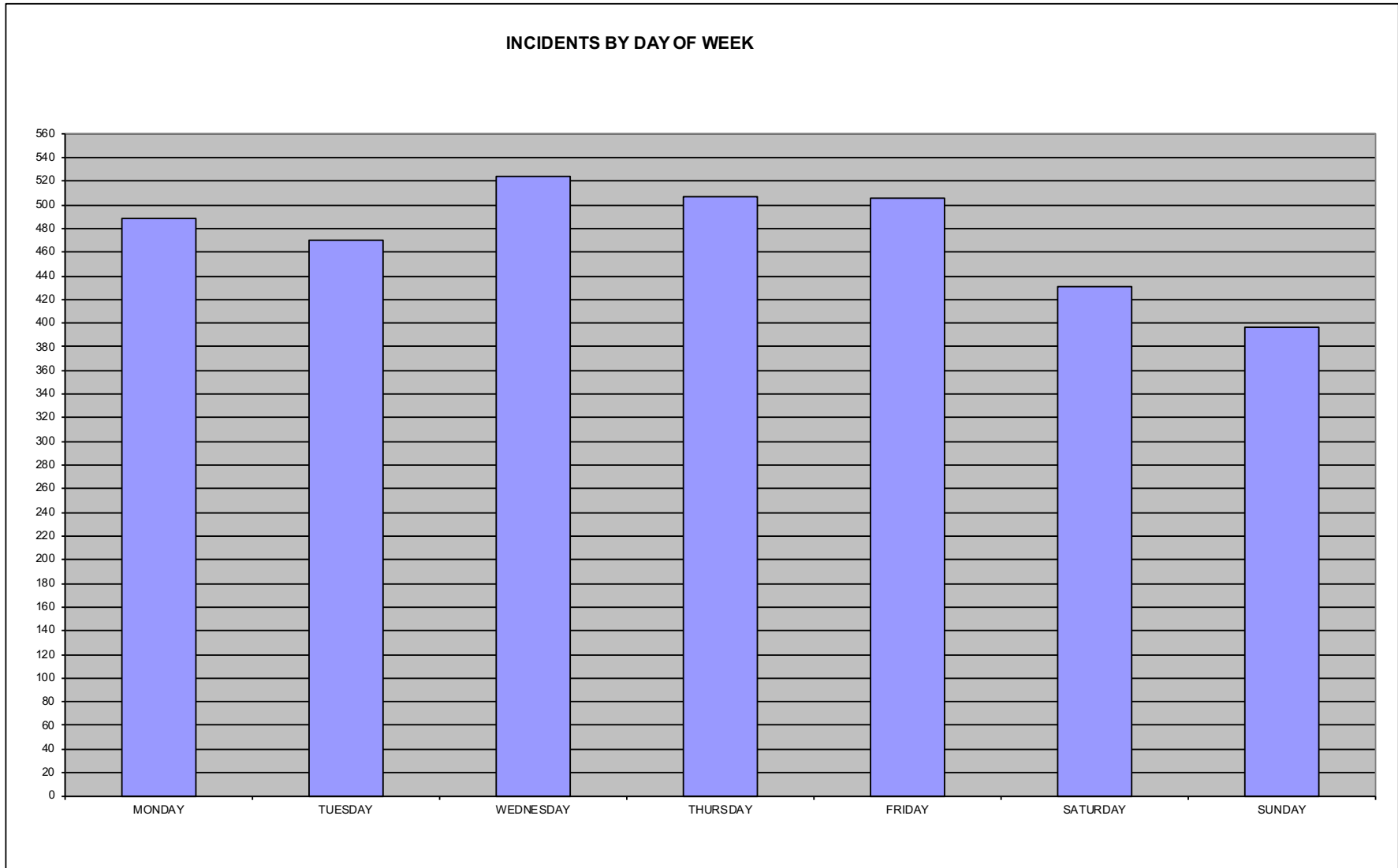
CALLS UNDER 7 MIN	1912
CALLS OVER 7 MIN	86

* Occurances of multiple calls within a 1 hour period: 1216
37%

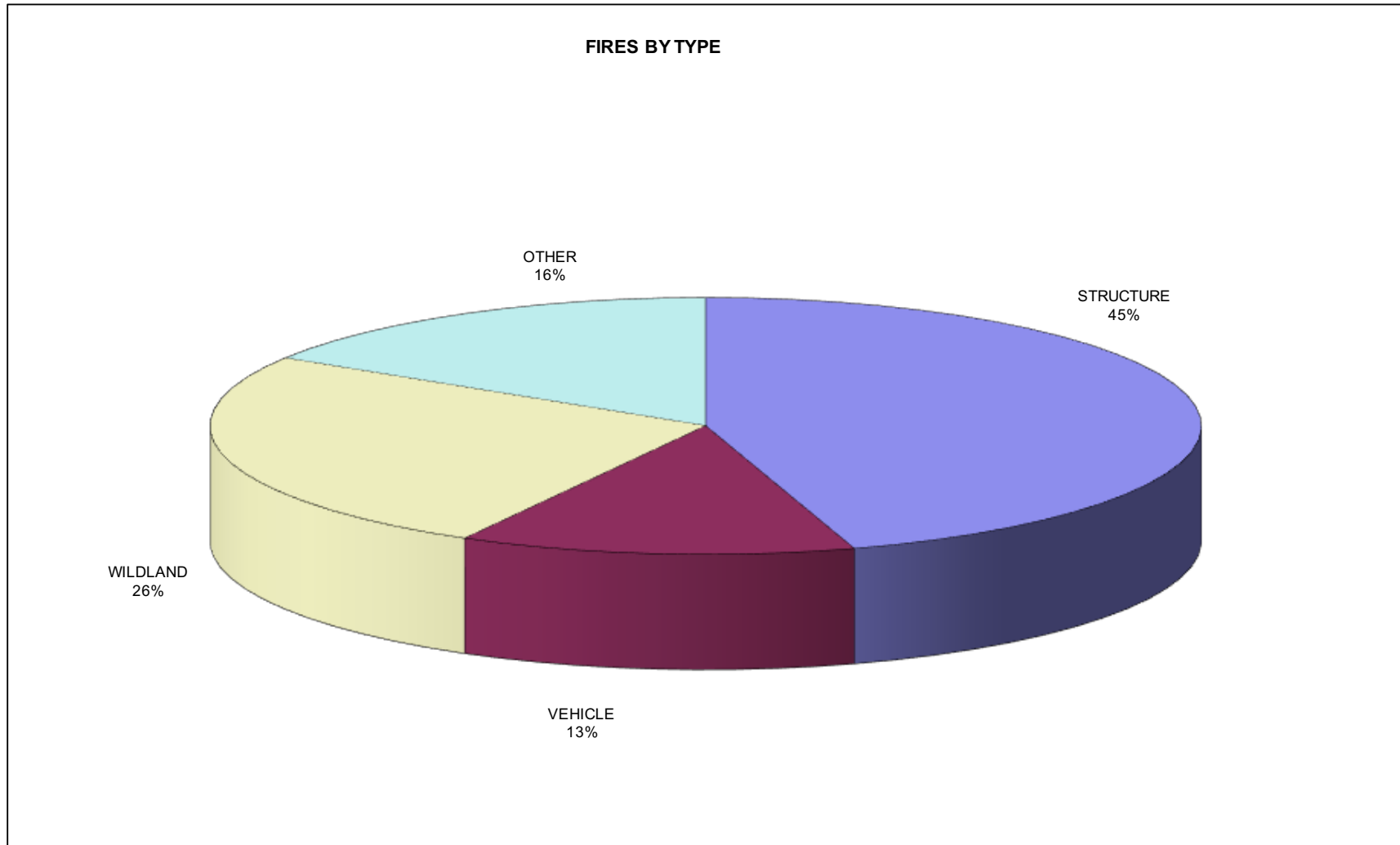
INCIDENTS BY TIME OF DAY



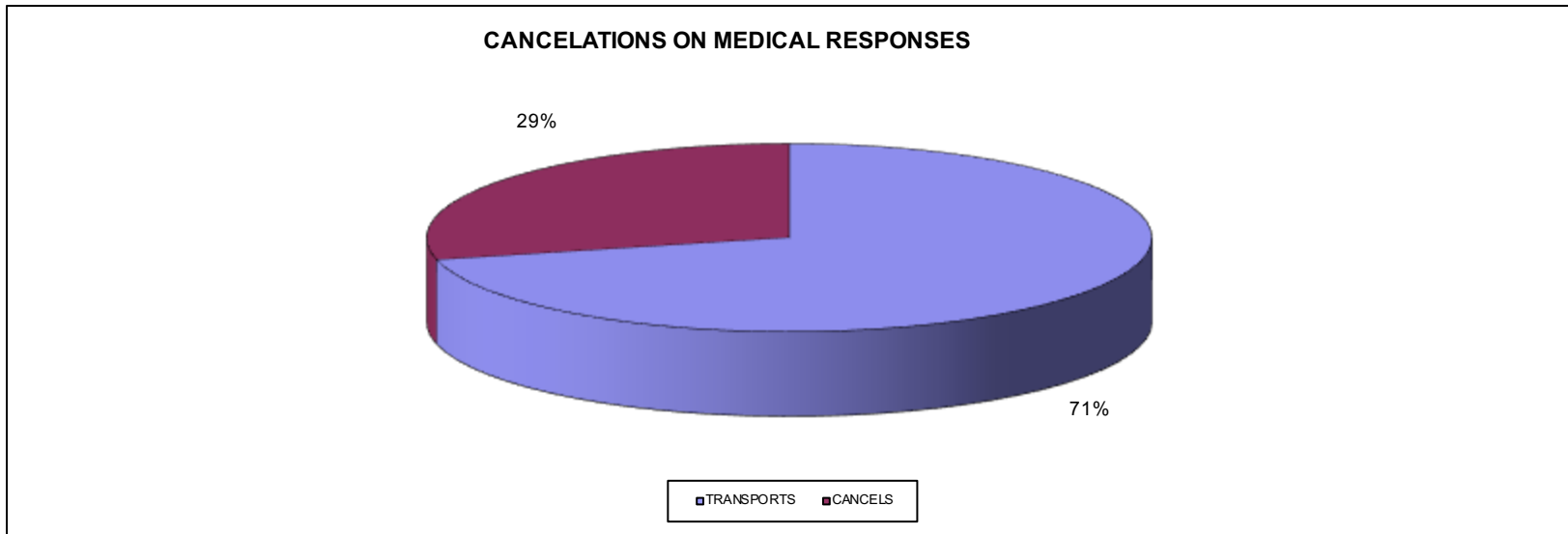
TIME	0:00	1:00	2:00	3:00	4:00	5:00	6:00	7:00	8:00	9:00	10:00	11:00	12:00	13:00	14:00	15:00	16:00	17:00	18:00	19:00	20:00	21:00	22:00	23:00
INCIDENTS	67	69	58	48	57	66	82	140	148	180	180	181	202	213	183	211	210	198	193	179	139	129	116	75



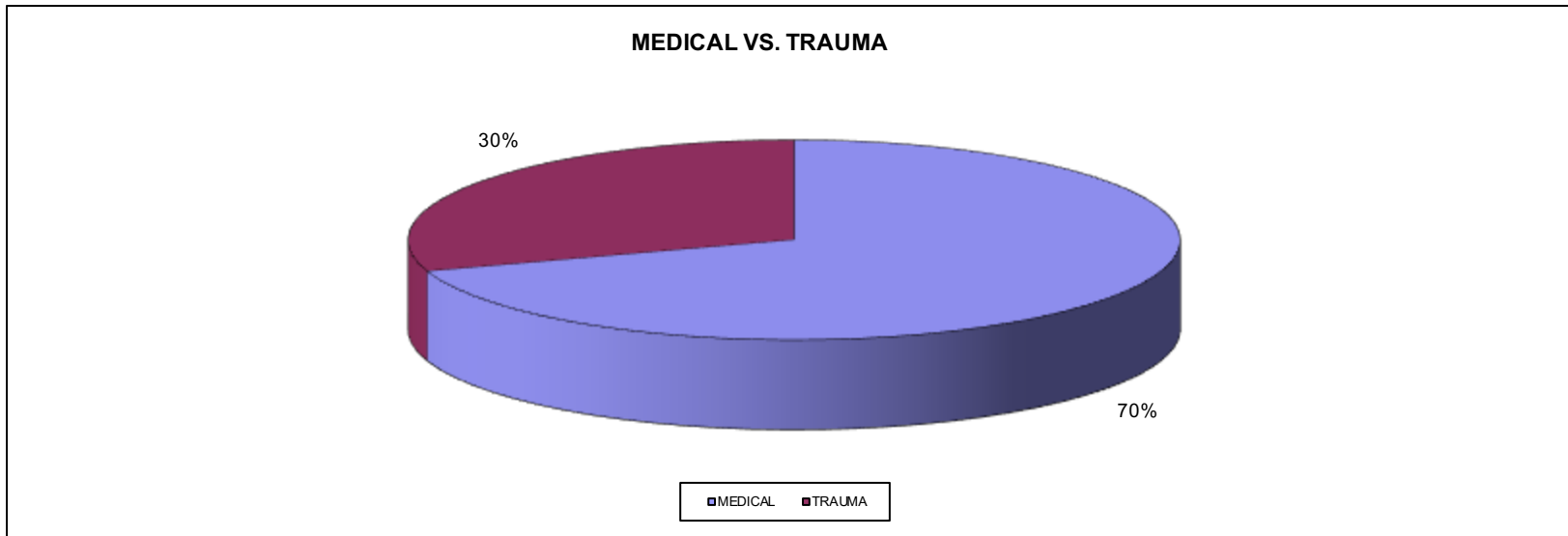
DAY	MONDAY	TUESDAY	WEDNESDAY	THURSDAY	FRIDAY	SATURDAY	SUNDAY
INCIDENTS	489	470	524	507	506	431	397



STRUCTURE	14
VEHICLE	4
WILDLAND	8
OTHER	5

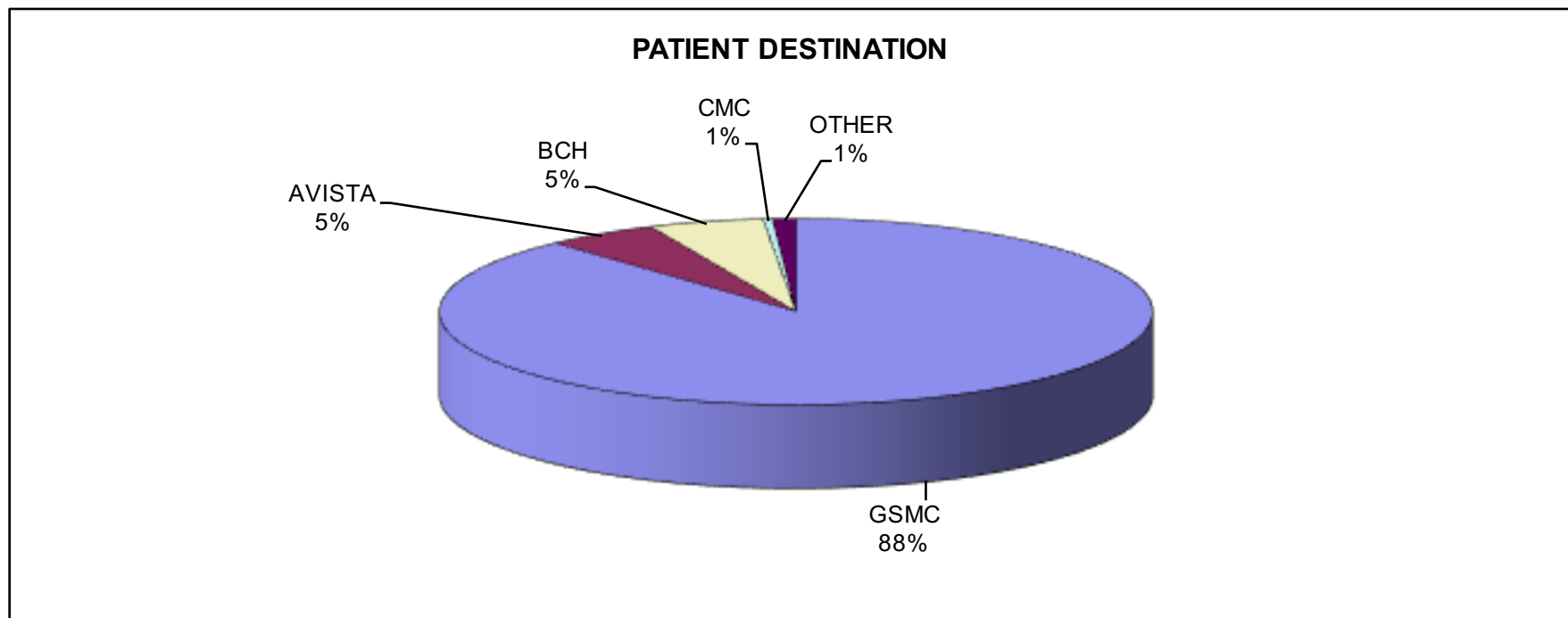


TRANSPORTS	1594
CANCELS	645



MEDICAL	1565
TRAUMA	674

Number of MVA's within Trauma 247



GSMC	1424	
AVISTA	83	
BCH	84	
CMC	7	
OTHER	17	* 3 to Saint Josesph Medical Center * 12 to Saint Anthony North Hospital * 2 to The Children's Hospital Aurora

MISCELLANEOUS EMS INFORMATION

Total Transports	1615	
Aid Received Transports	194	
Aid Given Transports	110	
Helicopter Transports	0	
# Multiple Transport Calls	21	
# Cardiac Arrests Treated	9	
Cardiac Arrest "Saves"	1	= 11%
Total Emergent Returns	125	= 8%